

VIRTUE



VIRTUE YACHTS

VIRTUE V14 HT PRESENTATION



AGENDA

1. EXTERIOR DESIGN
2. INTERIOR DESIGN
3. BOAT SPECIFICATION
4. PERFORMANCE SHEET
5. BASIC EQUIPMENT + STANDARD BOAT PRICING
6. POSSIBLE OPTIONS



1. EXTERIOR DESIGN





1. EXTERIOR DESIGN





1. EXTERIOR DESIGN





1. EXTERIOR DESIGN





1. EXTERIOR DESIGN





1. EXTERIOR DESIGN





1. EXTERIOR DESIGN

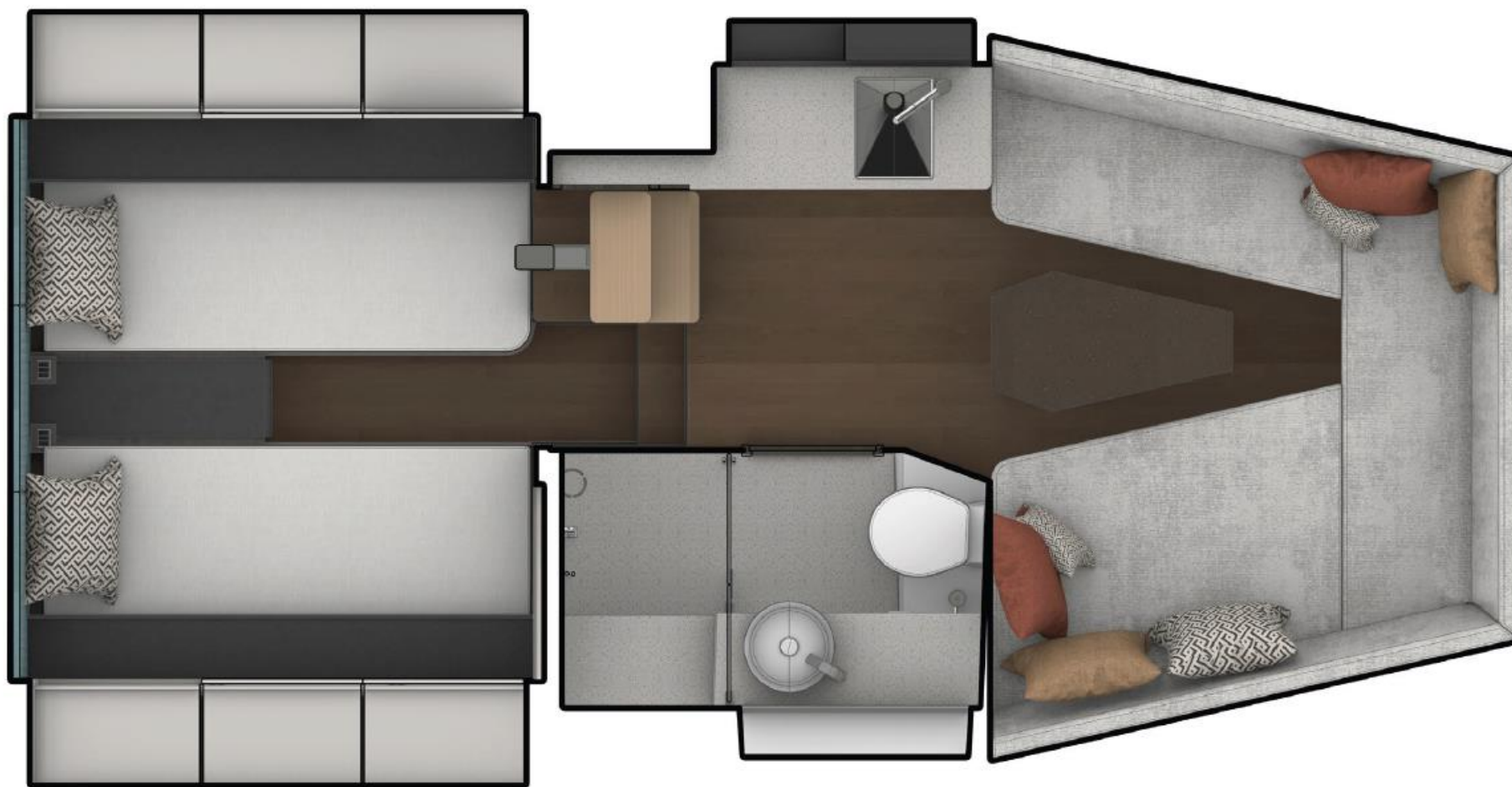




1. EXTERIOR DESIGN



2. INTERIOR DESIGN



2. INTERIOR DESIGN



2. INTERIOR DESIGN



2. INTERIOR DESIGN



2. INTERIOR DESIGN



2. INTERIOR DESIGN



2. INTERIOR DESIGN



2. INTERIOR DESIGN



2. INTERIOR DESIGN



2. INTERIOR DESIGN





3. BOAT SPECIFICATION

V14 HT Technical Specifications

V 14 HT

| | |
|-------------------------------|--------------------------------------------------|
| Overall Length (excl. Engine) | 13,19 m |
| Beam | 3,98 m |
| Weight (excl. Engine) | 8674 kg |
| Passengers | B 10/C 12 |
| Berths | 2 + 2 |
| Fuel Tank | 900 l |
| Fresh Water Tank | 180 l |
| Black Water Tank | 110 l |
| Outboard engines | 2x 350hp or 2x400hp or 2x600hp // 3x300 to 3x400 |
| Max speed range | 55 knots |
| Construction | Vacuum infused GRP |
| Hull design | Twin stepped V with Petestep® Technology |
| Design exterior/interior | Guido de Groot |



4. PERFORMANCE SHEET

petestep[®]

Performance indications Virtue V14

Loadcase: 2 x Outboard

Weight: 9014 kg

LCG: 4.15 m

| Speed (kts) | Resistance (kN) | Trim angle (°) | CFD trim | Power needed [hp] | Pe (kW) |
|-------------|-----------------|----------------|----------|-------------------|---------|
| 40 | 15.33 | 2.85 | 1.50 | 681 | 315 |
| 45 | 17.33 | 2.60 | 1.25 | 866 | 401 |
| 50 | 19.53 | 2.47 | 1.12 | 1084 | 502 |
| 38 | 14.46 | - | - | 610 | 283 |
| 40.5 | 15.51 | - | - | 697 | 323 |
| 43 | 16.56 | - | - | 791 | 366 |
| 52.5 | 20.55 | - | - | 1198 | 555 |



4. PERFORMANCE SHEET

petestep[®]

Performance indications Virtue V14

Loadcase: 3 x 400hp Outboard

Weight: 9314 kg

LCG: 3.99 m

| Speed (kts) | Resistance (kN) | Trim angle (°) | CFD trim | Power needed [hp] | Pe (kW) |
|-------------|-----------------|----------------|----------|-------------------|---------|
| 50 | 20.58 | 3.08 | 0.93 | 1143 | 529 |

Loadcase: 2 x 600hp Outboard

Weight: 9614 kg

LCG: 3.84 m

| Speed (kts) | Resistance (kN) | Trim angle (°) | CFD trim | Power needed [hp] | Pe (kW) |
|-------------|-----------------|----------------|----------|-------------------|---------|
| 55 | 23.10 | 2.67 | 0.52 | 1270 | 654 |



4. PERFORMANCE SHEET

petestep[®]

Performance indications Virtue V14

Loadcase: 3 x 400hp Outboard

Weight: 9314 kg

LCG: 3.99 m

| Speed (kts) | Resistance (kN) | Trim angle (°) | CFD trim | Power needed [hp] | Pe (kW) |
|-------------|-----------------|----------------|----------|-------------------|---------|
| 50 | 20.58 | 3.08 | 0.93 | 1143 | 529 |

Loadcase: 2 x 600hp Outboard

Weight: 9614 kg

LCG: 3.84 m

| Speed (kts) | Resistance (kN) | Trim angle (°) | CFD trim | Power needed [hp] | Pe (kW) |
|-------------|-----------------|----------------|----------|-------------------|---------|
| 55 | 23.10 | 2.67 | 0.52 | 1270 | 654 |



5. BASIC EQUIPMENT

V14 HT Basic Equipment

| | |
|-------------------------|-----------------------------------------------------------------------------------------------------------------------------------------|
| Engines | 2x350hp Mercury Verado V10 |
| Steering | Mercury Power Steering |
| Display MFD | 1 x Garmin 1623 xsv + transducer |
| Cushions | Inside and outside cushions as per presentation |
| Wetbar | Including sink/drawers/fridge |
| Fridges | 1 outside, 1 in cabin |
| Floor | non skid grp |
| Berths | 2 + 2 |
| Fuel Tank | 900 l |
| Fresh Water Tank | 180 l |
| Black Water Tank | 110 l |
| Terrace | one side terrace - SB side |
| Cleats | 8 cleats |
| Cockpit | U-sofa with table combined with bathing cushin |
| Seats | 2 driver seats or sofa |
| Bow thruster | power 110 kgf |
| Anchor system | 10 kg anchor with sesmart system |
| Cockpit Storage | big storage space for jetski or small teneder, stoarge for seabob, stoarge for fenders and ropes, storage for lifevests and raft |
| Cabin Storage | 3 storage places under the front bow cushions, wardrobe for clothes, 2 cabinets in midcabin, 3 drawer in kitchen module + cabinet |
| BASIC BOAT PRICE | 640 000 EUR NET |



6. POSSIBLE OPTIONS

- Engine setup:
 - 2 X MERCURY VERADO 400 HP V10
 - 3 X MERCURY VERADO 400 HP V10
 - 3 X MERCURY VERADO 300 HP V8
 - 2 X MERCURY VERADO 600 HP V12
- Navigation:
 - Mercury Throttle and JPO controls on helm
 - Bow thruster
 - Interceptors
 - Rear camera
 - Radar
 - Search light
 - Radio vhf with ais
- Color:
 - Custom color and lacquer on request
- Decking:
 - Flexiteek
 - Soft deck as an option
- Upholstery:
 - Same as now, Silvertex



6. POSSIBLE OPTIONS

- Options:
 - Warm Water System
 - Windlass in front
 - Webasto Heater
 - Air conditioning (Webasto)
 - Conversion to Lithium Batteries Mastervolt
 - Battery monitoring system Mastervolt
 - Mooring package
 - Underwater lights RGB, 2 pcs transom, 2 pcs each side of hull
 - Deck Lights RGB
 - JL audio system (standard package 6 speakers, upgrade package 8 speakers + subwoofer, OPTIONAL SECOND SUBWOOFER)
 - Grey water tank (Swiss standard)
 - Electrical Grill for wetbar
 - Front and aft shade with poles.
 - Telescopic shade for T-Top version
 - Table in bow
 - Mattresses for sunbed in bow and back
 - Bow Thruster (Side-Power)
 - Shore power (Mastervolt)
 - Aft Gates
 - Inverter (Mastervolt)
 - Scanstrut Wireless Mobile Charger (Helm station)
 - Waterski frame
 - Ceramic Protection

6. POSSIBLE OPTIONS

- Options:
 - EPA Fuel system (for US market)
 - Electric opening roof
 - Cushion for anchor hatch in bow
 - USB sockets around the boat
 - Shower (Standard?)
 - Fridge in cabin
 - Ambiente lightning
 - Garage for pontoon frib 360 + electric engine avator 20e
 - Battery chargers mastervolt
 - Foldable gangway

